

4-D0001-01

Dual Trimmer Rail Assembly



*Pictured with 2 Trimmers for reference

OPERATIONAL MANUAL

BE Hemp Equipment
Carson City, Nevada



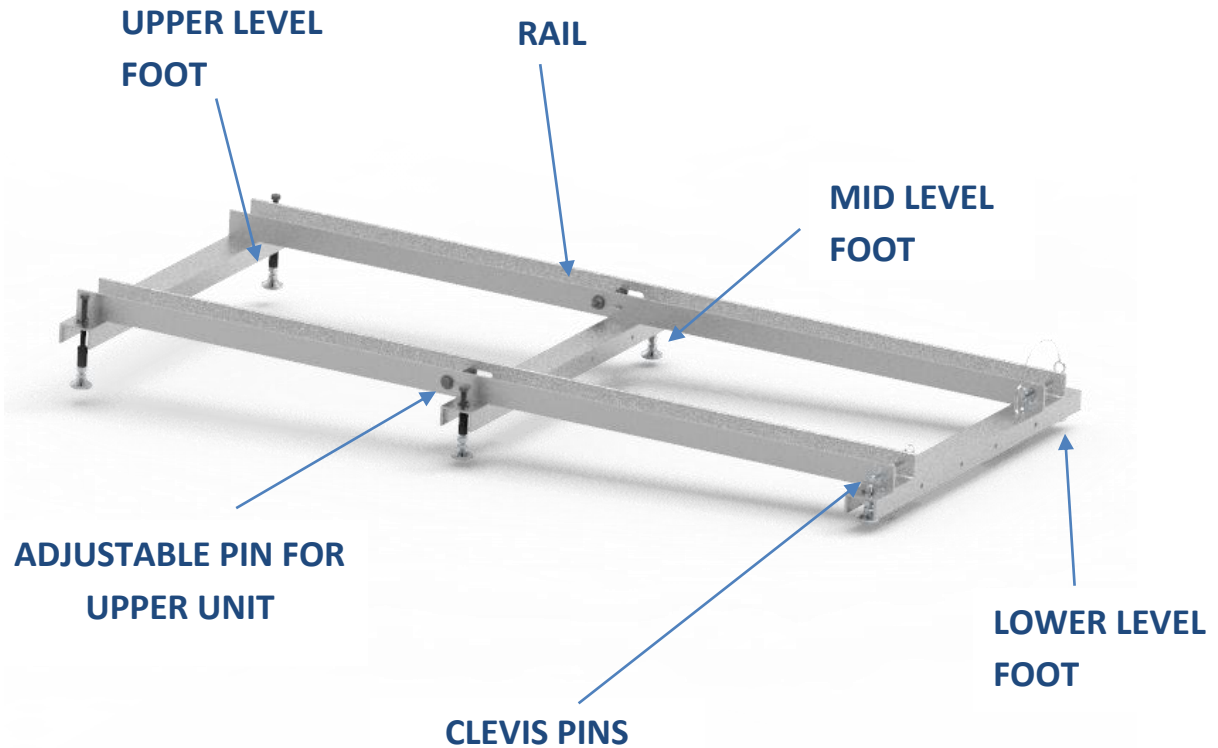
Safety

At BE Hemp Equipment (BE), safety is our number one priority. The following information provides guidelines for safety when using BE equipment. Any piece of machinery can become dangerous to personnel when improperly operated or poorly maintained. All employees operating and maintaining BE equipment should be familiar with its operation and should be thoroughly trained and instructed on safety. Most accidents are preventable through safety awareness.

Every effort has been made to engineer safety into the design of BE equipment per standards set forth by ANSI, the National Electric Code, and others that apply as necessary. Areas of potential danger are mechanically and/or electrically protected. Safety labels and instructional decals are visible to the operator and located near any potential hazard.

General Safety Guidelines

- Read the manual for any special operational instructions for each piece of equipment. A hard copy can be made available if requested.
- Know how the equipment functions and understand the operating processes.
- Wear the appropriate personal protective equipment for the job to be performed (EX: eye protection, hearing protection, gloves, etc.). Ensure that nothing you are wearing could get caught in the machinery
- Keep the operating zone free of obstacles that could cause a person to trip or fall toward an operating machine.
- Know where the FIRST AID SAFETY STATION is located.
- Never sit or stand on the machine or on anything that might cause you to fall against the machine.



The Double Rail Assembly is intended to be operated as a base to adjust the operating angle of two TR-2 Trimmers and to keep them in line and adjusted. The Primary Rails are intended to hold the wheels of two trimmers. The Clevis pins ensure the lower unit does not roll off of the Rail Assembly. The Adjustable Pins allow the operator to adjust the distance between the two trimmers. The Upper and Lower Level Feet allow the operator to adjust the angle of operation of the trimmers.

The higher the feet are adjusted, the faster the flower will be processed by the trimmers.

REMOVING FROM BOX AND INSPECTING

1. The Rail Assembly is not pre-assembled. Transport Rail Assembly in its packaging to location before unpacking it. If packing crate or boxes show signs of damage, take pictures and carefully document damage.
2. Remove all contents from boxes and drums. Verify the following;
 - a. Channel, Rail (2)
 - b. Channel, Cross Support (3)
 - c. Bolt, ½-13 x 5" (2)
 - d. Coupling Nut (4)
 - e. Self Leveling Feet (6)
 - f. Screw, Low Profile, 3/8-16 x 1" (12)
 - g. Washer, Locking, 3/8 (12)
 - h. Nut, 3/8-16 (12)
 - i. Pin, Clevis (2)
 - j. Bolt, ½-13 x 3 (2)
 - k. Bolt, ½-13 x 5, Stainless Steel (2)
 - l. Washer, ½" (4)
 - m. Nut, 1/2-13 (2)

ASSEMBLY

Tools Needed

1. ¾ Wrench, Open Ended (2)
2. 9/16 Wrench, Open Ended
3. 7/32 Allen Wrench

Instructions

Follow instructions as listed in attached drawings.

CLEANING

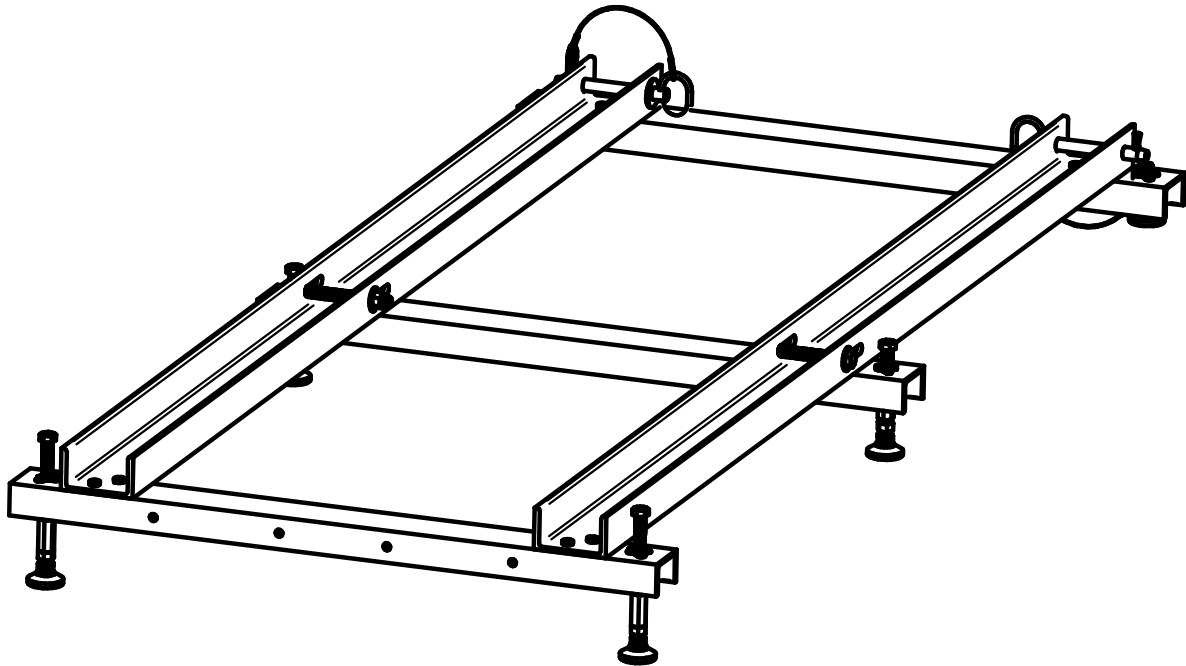
Cleaning of your Rail Assemblies will ensure that your Rails can be used for years to come. We suggest a light cleaning daily after each shift and more thorough cleaning every week and/or before being stored. Use standard water based, non-caustic, FDA Food grade approved detergents and/or clean water to clean machine.

REPLACEMENT PARTS

BE Hemp is happy to supply parts, however, also want to make the best effort to allow customers to re-supply themselves, as desired with standard consumable parts. If you should need additional support or other parts not on this list, BE Hemp is happy to offer support in whatever fashion needed.

NOTES

- 1. ASSEMBLE PER INSTRUCTIONS.
- 2. APPLY LIGHT COAT OF LB 8014 TO THE THREADS OF FASTENERS UNLESS OTHERWISE NOTED



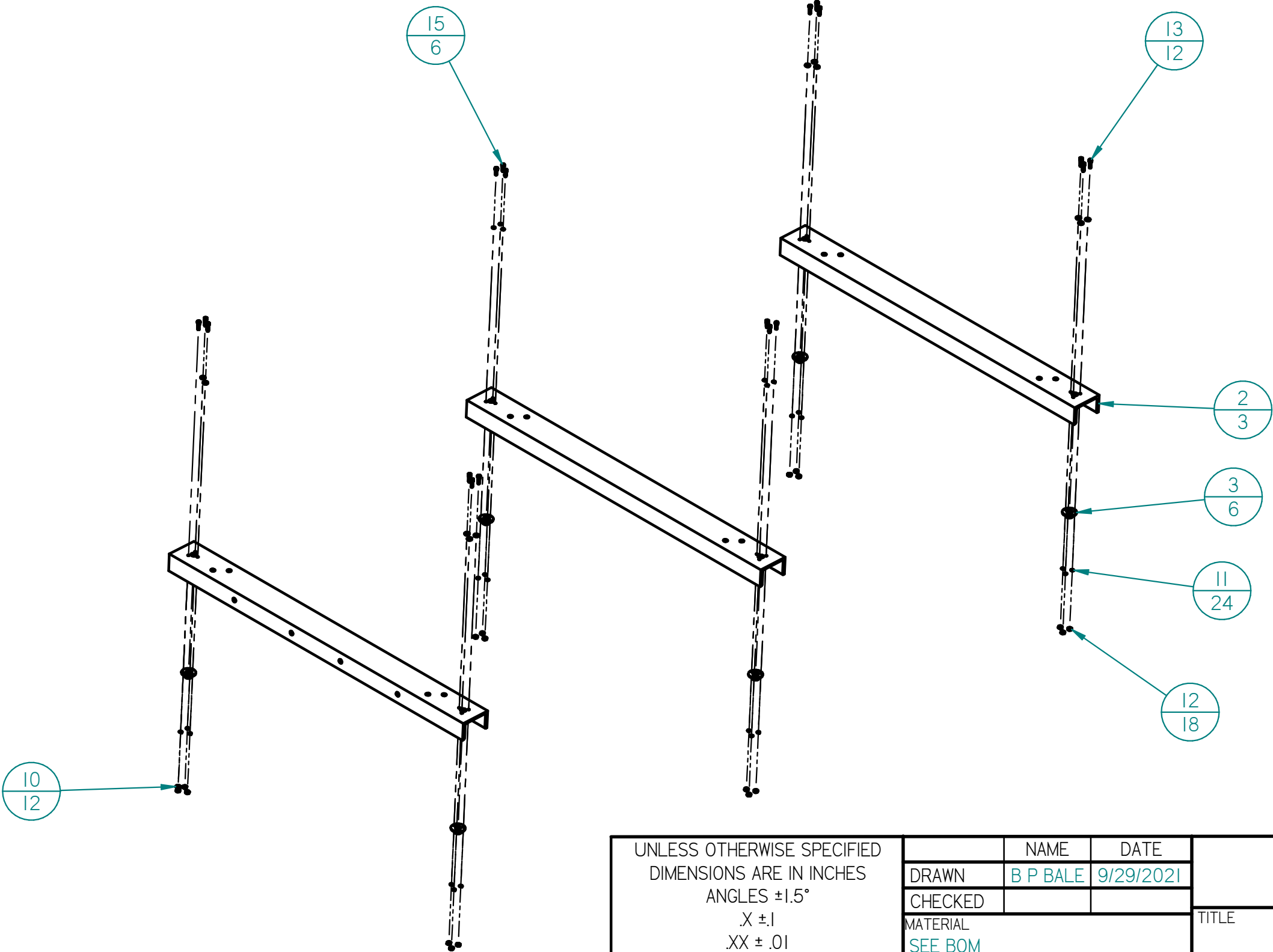
Item Number	Quantity	Document Number	Title
1*	2	4-C0002-01	CHANNEL, MODIFIED, 4"
2	3	4-C0003-01	CHANNEL, MODIFIED, 3" WIDE
3	6	90611A125	SCREW, MOUNTED NUT, 1/2-13
4	2	92620A729	BOLT, 1/2-13 X 5, BLACK OXIDE
5	4	90977A195	COUPLING NUT, 1/2-13, GRADE 5
6	6	6111K22	SELF LEVELING MOUNT, 1/2-13 X 2
7	12	93615A520	SCREW, LOW PROFILE, 3/8-16 X 1, SS
8	12	92147A031	WASHER, LOCKING, 3/8, SS
9	12	91845A031	NUT, 3/8-16, SS
10	12	91950A046	WASHER, SAE, #8, STAINLESS STEEL
11	24	92147A425	WASHER, LOCKING, #8, STAINLESS STEEL
12	18	91841A009	NUT, #8, STAINLESS STEEL
13	12	92196A196	SCREW, SOCKET, 8-32 X .75, STAINLESS STEEL
14	2	98412A509	PIN, CLEVIS, 5/8
15	6	92196A194	SCREW, SOCKET, 8-32 X .5, STAINLESS STEEL
16	2	92620A724	BOLT, 1/2-13 X 3, BLACK OXIDE
17	2	92240A732	SCREW, 1/2-13 X 5, STAINLESS STEEL
18	4	90107A033	WASHER, 1/2, STAINLESS STEEL
19*	2	91845A310	NUT, 1/2-13, STAINLESS STEEL
20*	1		

UNLESS OTHERWISE SPECIFIED
DIMENSIONS ARE IN INCHES
ANGLES ±1.5°
.X ±.1
.XX ± .01
.XXX ±.005
ALL DIA. CONC. WITHIN .005 TIR
SURFACE ROUGHNESS OF 63
INTERPRETE DIM ANDTOL PER
ASME Y14.5MK-1994

	NAME	DATE	BE HEMP EQUIPMENT		
DRAWN	B P BALE	9/29/2021			
CHECKED			TITLE RAIL ASSY, DOUBLE UNIT		
MATERIAL SEE BOM					
FINISH NONE			SIZE B	DWG NO 4-D0001-02	REV A
			FILE NAME: 4-D0001-02.dft		
			SCALE:	WEIGHT:	SHEET 1 OF 5

NOTES

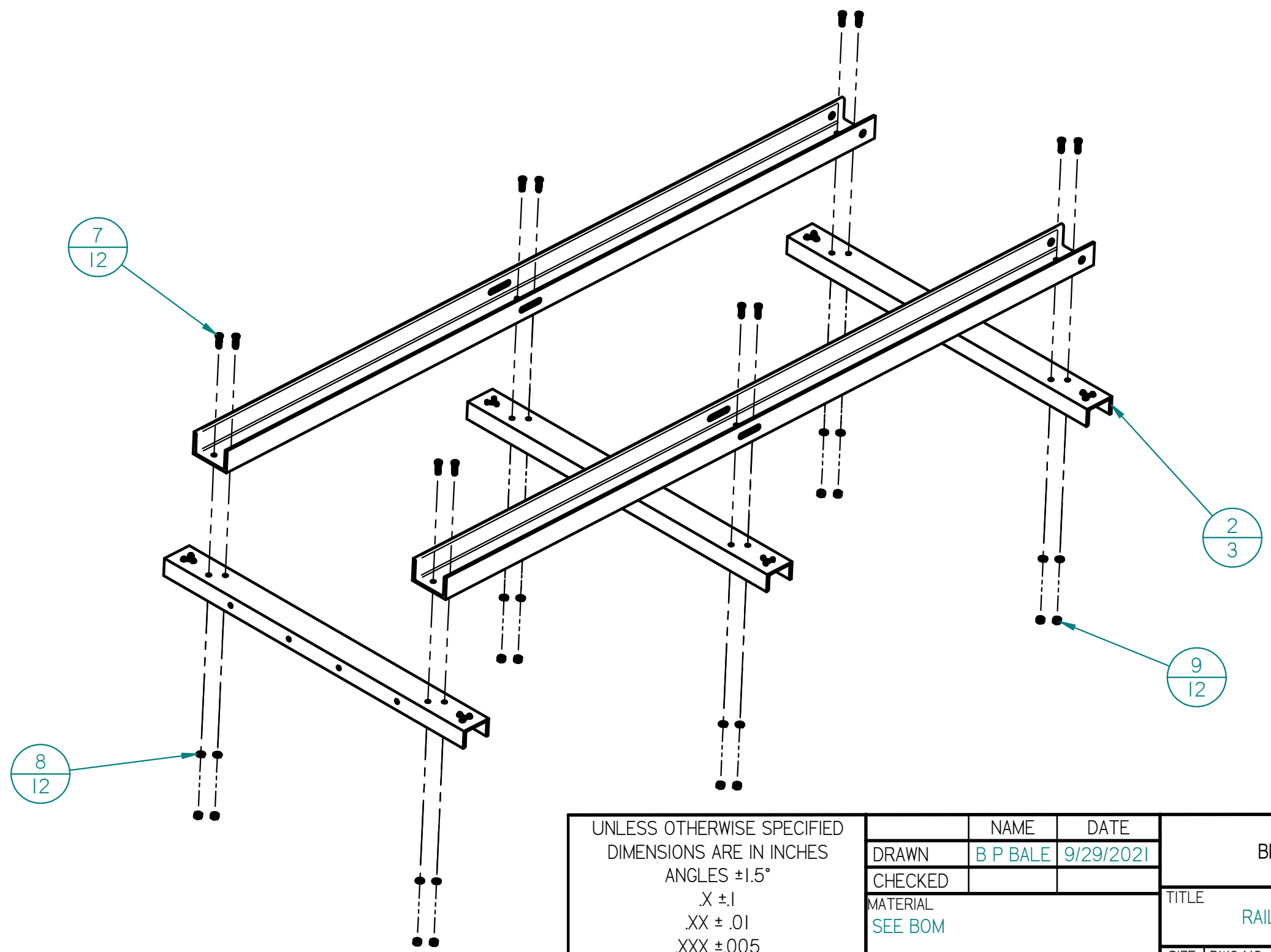
I. TORQUE ALL 8-32 SCREWS TO 19 INCH-LBS



UNLESS OTHERWISE SPECIFIED DIMENSIONS ARE IN INCHES ANGLES ±1.5° .X ±.1 .XX ±.01 .XXX ±.005 ALL DIA. CONC. WITHIN .005 TIR SURFACE ROUGHNESS OF 63 INTERPRETE DIM ANDTOL PER ASME Y14.5MK-1994				BE HEMP EQUIPMENT		
				TITLE RAIL ASSY, DOUBLE UNIT		
				SIZE B	DWG NO 4-D0001-02	REV A
				FILE NAME: 4-D0001-02.dft		
				SCALE:	WEIGHT:	SHEET 2 OF 5

NOTES

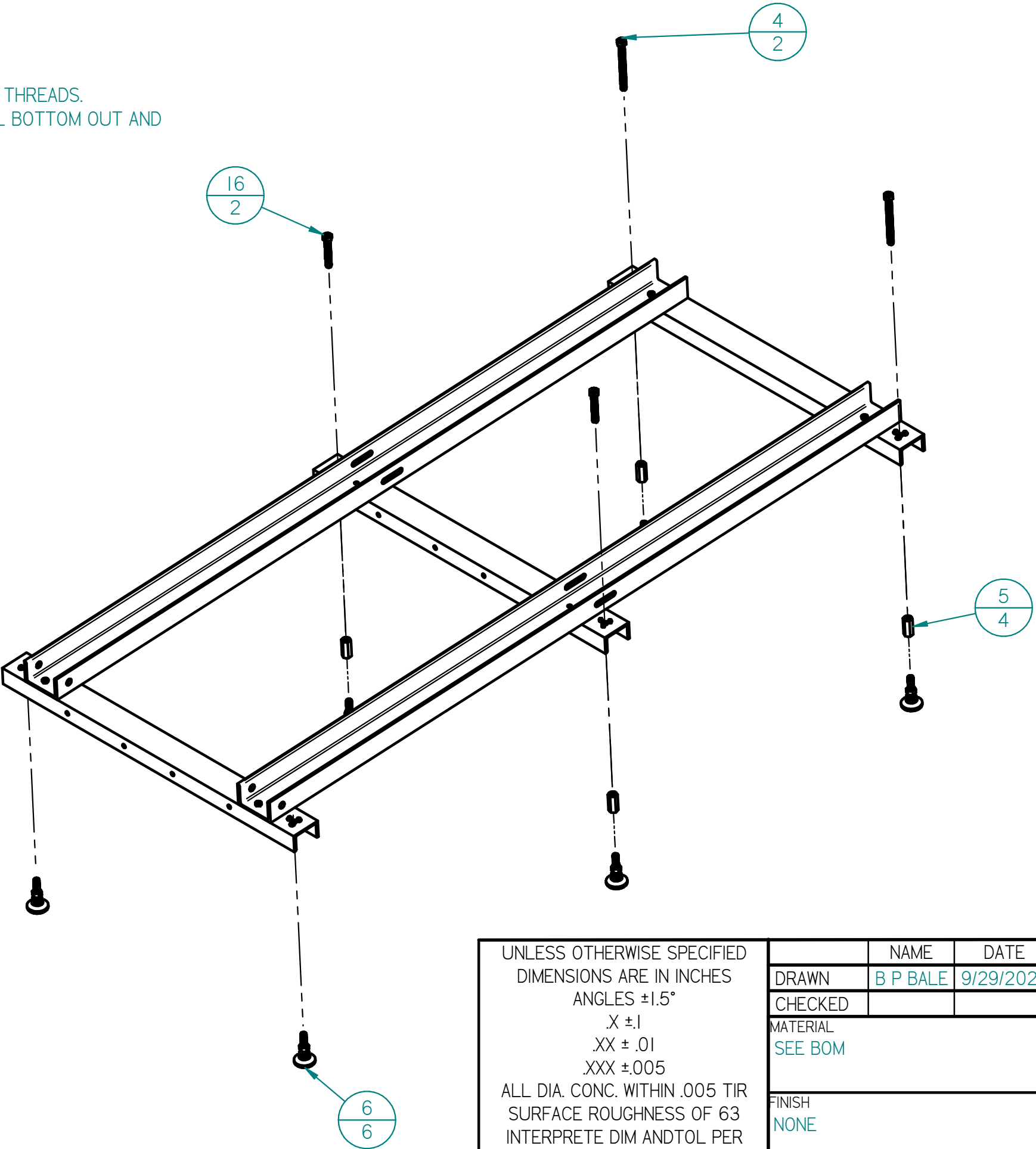
- 1. TORQUE ALL $\frac{3}{8}$ -FASTENERS TO 20 FT-LBS
- 2. ENSURE RAILS ARE SQUARE DURING ASSEMBLY



UNLESS OTHERWISE SPECIFIED DIMENSIONS ARE IN INCHES ANGLES ±1.5° .X ±.1 .XX ± .01 .XXX ±.005 ALL DIA. CONC. WITHIN .005 TIR SURFACE ROUGHNESS OF 63 INTERPRETE DIM ANDTOL PER ASME Y14.5MK-1994		NAME	DATE	BE HEMP EQUIPMENT		
	DRAWN	B P BALE	9/29/2021			
	CHECKED					
	MATERIAL SEE BOM			TITLE RAIL ASSY, DOUBLE UNIT		
	FINISH NONE					
	SIZE B		DWG NO 4-D0001-02		REV A	
	FILE NAME: 4-D0001-02.dft					
SCALE:		WEIGHT:		SHEET 3 OF 5		

NOTES

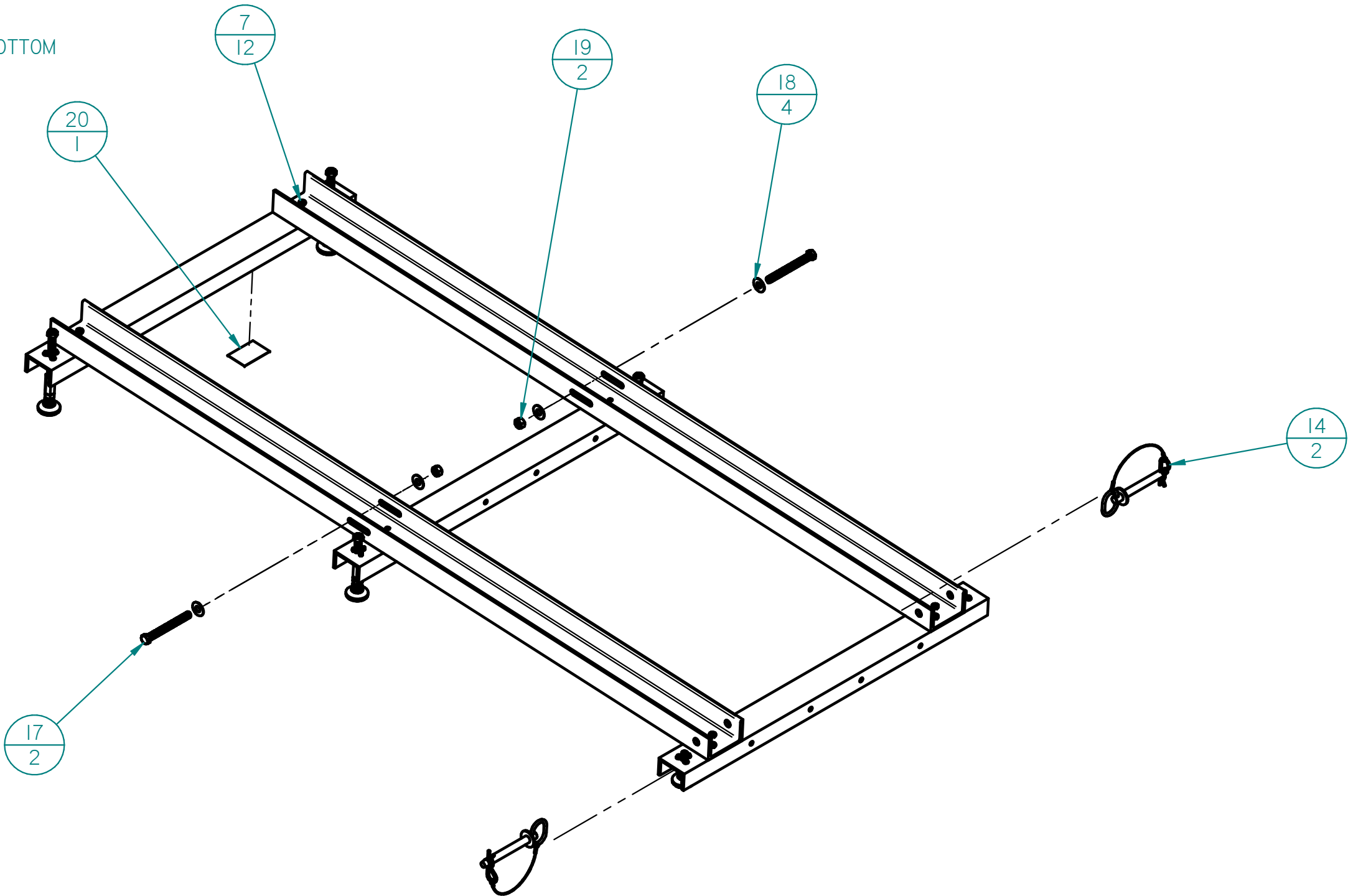
1. INSERT ITEM 6 INTO ITEM 5 HALF WAY UP THREADS.
2. INSERT ITEM 16 AND 4 INTO ITEM 5 UNTIL BOTTOM OUT AND
TIGHTEN USING OPEN ENDED WRENCHES.



UNLESS OTHERWISE SPECIFIED DIMENSIONS ARE IN INCHES ANGLES ±1.5° .X ±.1 .XX ± .01 .XXX ±.005 ALL DIA. CONC. WITHIN .005 TIR SURFACE ROUGHNESS OF 63 INTERPRETE DIM ANDTOL PER ASME Y14.5MK-1994		NAME	DATE	BE HEMP EQUIPMENT		
	DRAWN	B P BALE	9/29/2021			
	CHECKED					
	MATERIAL SEE BOM			TITLE RAIL ASSY, DOUBLE UNIT		
	FINISH NONE			SIZE B	DWG NO 4-D0001-02	REV A
				FILE NAME: 4-D0001-02.dft		
				SCALE:	WEIGHT:	SHEET 4 OF 5

NOTES

- 1. TORQUE ITEM 17 TO 7 FT-LBS
- 2. APPLY STANDARD PART NUMBER TAG TO BOTTOM OF RAIL.



UNLESS OTHERWISE SPECIFIED DIMENSIONS ARE IN INCHES ANGLES ±1.5° .X ±.1 .XX ±.01 .XXX ±.005 ALL DIA. CONC. WITHIN .005 TIR SURFACE ROUGHNESS OF 63 INTERPRETE DIM ANDTOL PER ASME Y14.5MK-1994				BE HEMP EQUIPMENT		
				TITLE RAIL ASSY, DOUBLE UNIT		
				FILE NAME: 4-D0001-02.dft		
DRAWN B P BALE 9/29/2021				SIZE B		
CHECKED				DWG NO 4-D0001-02		
MATERIAL SEE BOM				REV A		
FINISH NONE				SCALE:		
				WEIGHT:		
				SHEET 5 OF 5		